

Alex Williamson's Big Tree for R-S16264 – August 2018

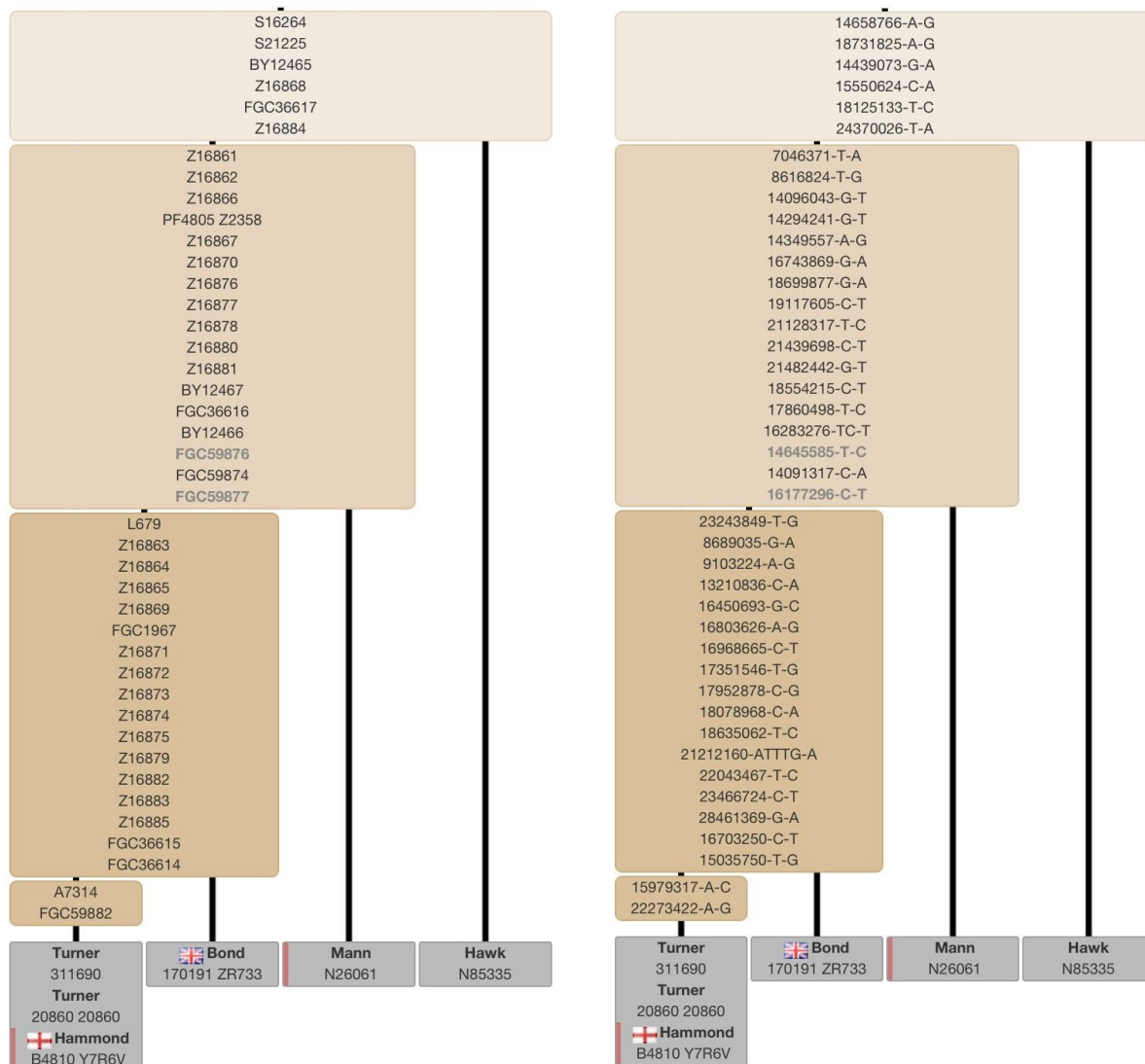
Mutation Names

Location (hg19) and Alleles

The Big Tree: R-S16264 The Big Tree: R-S16264

R-P312/S116 > Z290 > L21/S145 > DF13 > Z39589 > S16264

R-P312/S116 > Z290 > L21/S145 > DF13 > Z39589 > S16264



Notes:

1. The Big Tree does not include **Recurrent SNPs**. Data for these are:
 A review of Hawk N85335, Bond 170191 and Turner 20860's .vcf files shows that all three men are S826+ while Bond and Turner are also L147+, PF4805+, FGC1967+ and S699/Y783+. Bond is also CTS1037+, which is not reported in the other .vcf files. These SNPs are at the following locations: L147 6753258-T-C, CTS1037 7164283-C-T, PF4805 14294241-G-T, S826 15226253-C-T, FGC1967 16803626-A-G and S699/Y783 19048392-T-G
2. For '**Personal**' SNPs see data for each individual at www.ytree.net
3. All locations given above are based on the GRCh19 Y-chromosome reference sequence.